

Chick Egg Cosies

Designed by Sylvia Leake

These gorgeous chicks will brighten up your breakfast table not only at Easter but all year round. Use them to cover chocolate eggs for the children as an Easter surprise!

They are easy and quick to knit.



PATTERN INFORMATION

Size

9.5cm/3¾in high, 15.5cm/6in circumference (before shaping top)

Materials

Yarn:

100% wool or a wool/acrylic mix is ideal in DK/8ply/light worsted weight.

Suggested shades:

Gold or Cream (MC) and Copper or Gold (beak)

Yarn amounts: No more than 15g in MC and oddments for beaks.

1 pair 4mm (No 8/US 6) needles

2 black beads for eyes (with hole large enough for yarn to pass through)

Note: Yarn amounts given are based on average requirements and are approximate.

Tension/Gauge

22 sts and 28 rows to 10cm/4in using 4mm needles over st st after light steaming.

Use larger or smaller needles if necessary to obtain correct tension.

Pattern Notes

Knit side is used as right side.

Eyes can be added using a duplicate stitch (Swiss darning) in black yarn rather than using beads if you prefer.

Abbreviations

beg – begin(s), beginning

CC – contrast colour

cm – centimetre(s)

cont – continue(s), continuing

DK – double knitting (light worsted)

g st – garter stitch (k every row)

in – inch(es)

k – knit

k2tog – knit 2 stitches together (knit the next 2 stitches together as one - to decrease)

kfb – knit front and back (knit into the front and back of next stitch – to increase)

MC – main colour

mm – millimetres

p – purl

RS – right side

rem – remain(s), remaining

rep – repeat

st – stitch, **sts** – stitches

st st – stocking stitch (k1 row, p1 row, rep these 2 rows throughout)

tog – together

tbl – through the back of the loop(s)

WS – wrong side

PATTERN INSTRUCTIONS



MC – Gold, Beak – Copper

Using 4mm/US 6 needles and MC,
cast on 35 sts.

Edging

Starting with a k row, work 6 rows in st st,
(these rows form the roll hem).

Row 7: k.

Row 8: k.

Body

RS facing and starting with a k row, work 12
rows in st st.

Row 13: k15, add bead to last st worked, k5,
add bead to last st worked, k15. (See Pattern
Tip for adding beads)

Row 14: p.

Row 15–16: work 2 more rows in st st.

Shape top

Row 1: k1, k2tog, *k3, k2tog, rep from * to
last 2 sts, k2. (28 sts)

Row 2: p.

Row 3: k1, k2tog, *k2, k2tog, rep from * to
last st, k1. (21 sts)

Row 4: p.

Row 5: *k1, k2tog, rep from * to last 3 sts, k3.
(15 sts)

Row 6: p.

Row 7: *k1, k2tog, rep from * to end of row.
(10 sts)

Row 8: p.

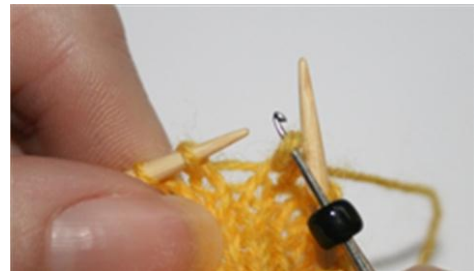
Cut yarn, leaving a long tail. Using a darning
needle,
thread yarn
through the
rem 10 sts
and pull up.



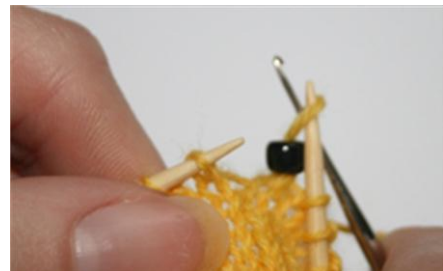
Pattern Tip

A small number of beads can be added securely
as follows:

Place a bead on a crochet hook (you will need
a small hook size so that the bead will fit). Use
the crochet hook to take the last st worked off
the right hand needle.



Slip the bead off the hook and on to the st.
Replace the st on to the right hand needle.



Cont to work along the row.



Wings (make two)

Using 4mm/US 6 needles and MC, cast on 3 sts. Work in g st thus:

Row 1: k1, kfb, k1. (4 sts)

Row 2: k.

Row 3: k1, kfb, kfb, k1. (6 sts)

Row 4: k.

Cont in g st and work 6 rows straight.

Row 11: k1, k2tog tbl, k2tog, k1. (4 sts)

Cast/bind off

rem 4 sts.



Beak

Using 4mm/US 6 needles and an oddment of copper coloured yarn, cast on 3 sts. Work thus:

Cast/bind off 1 st, slip last st used in cast off back on to left hand needle (2 sts), cast on 1 st (3 sts), cast off all sts.

Using a slip stitch seam, sew cast/bind off edge securely to the chick between and slightly below the eyes, see photograph of finished cosy.



To make up

Lightly steam press.

Using tail end left from pulling up sts at top of cosy and using mattress stitch, join centre back seam, reversing last rows of seam for roll edge. Using a slip stitch seam, sew cast/bind off edge of wings securely to each side of the chick. Weave in any rem yarn ends.



MC – Cream, Beak – Gold

For this chick follow the instructions as previously, using Cream as MC and Gold for the beak.

© Sylvia Leake 2012

The Chick Egg Cosies knitting pattern and design is for personal use only and should not to be used for profit.